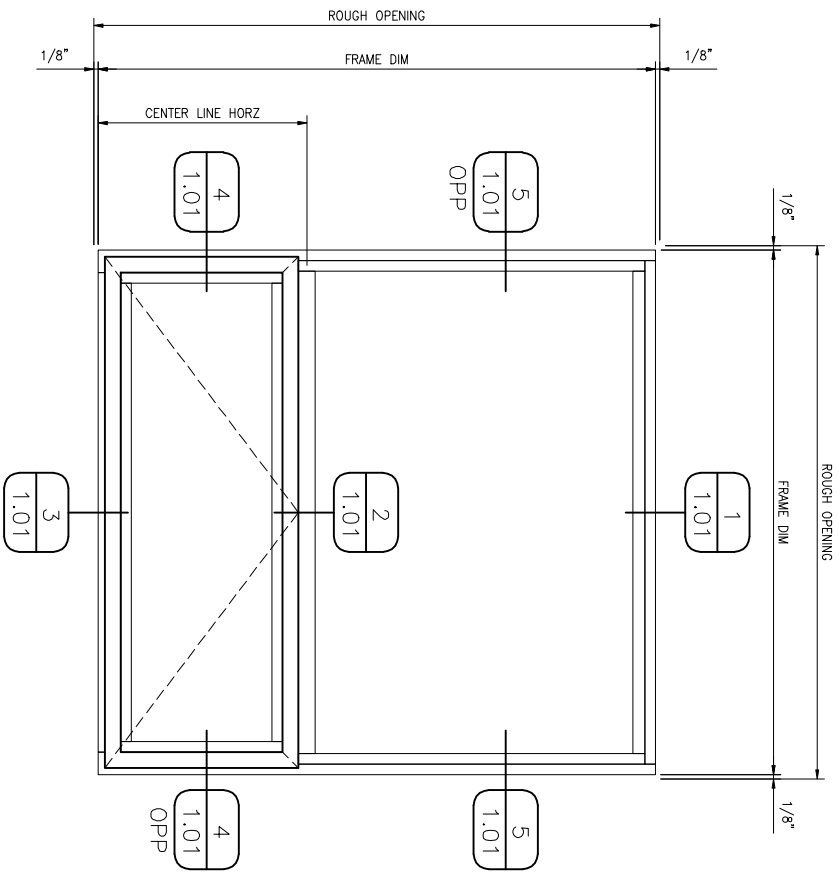
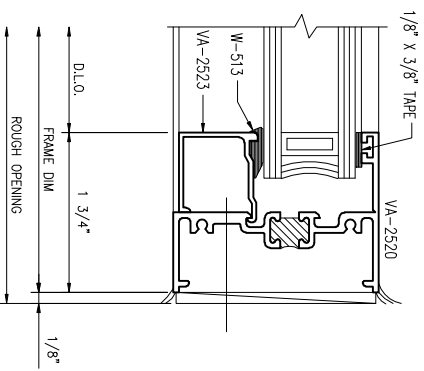
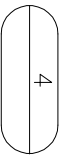
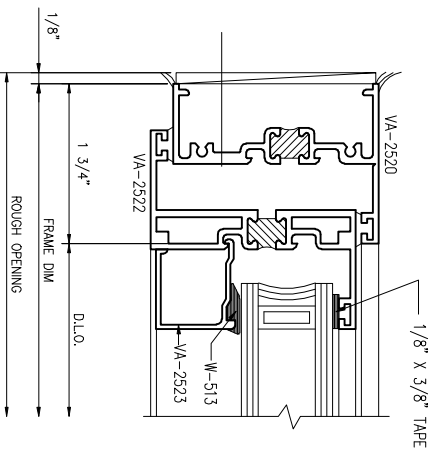
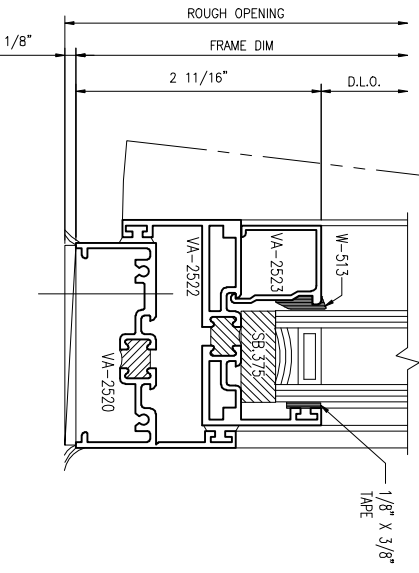
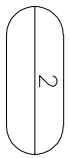
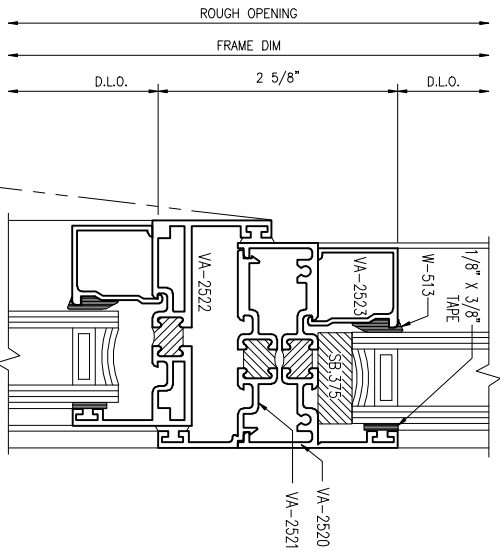
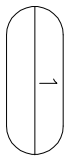
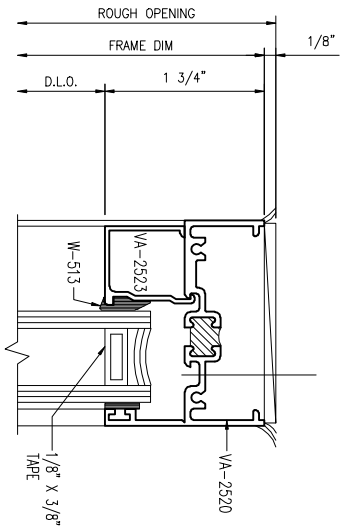


**SERIES 2500 THERMAL FIXED OVER PROJECT OUT VENT**

DETAIL VIEWED FROM THE EXTERIOR.  
 SCREENS AVAILABLE AS REQUIRED.  
 GLASS FORMULA IS:  
 VENT WIDTH = V.D. - 4 9/16"  
 VENT HEIGHT = V.D. - 4 9/16"  
 FIXED LITE WIDTH = D.L.O. + 1"  
 FIXED LITE HEIGHT = D.L.O. + 1"



PROJECT NO:	SCALE FULL SCALE DETAILS
PAGE #:	DRAWN BY: H.D.S.
1.01	

PROJECT:	STANDARD SERIES 2500 DETAILS FIXED OVER PROJECT OUT
LOCATION:	
CUSTOMER:	
ARCHITECT:	

**Valley Building Specialties V.B.S.**  
*Windows, Doors and More*

5401 Central Avenue Suite "G"  
 Hot Springs, AR 71913  
 501-525-3268

© 2006 VBS ALL RIGHTS RESERVED

REV.	BY	DATE	DESCRIPTION
			FIRST SUBMISSION